



CeraBur | K157 & K160A

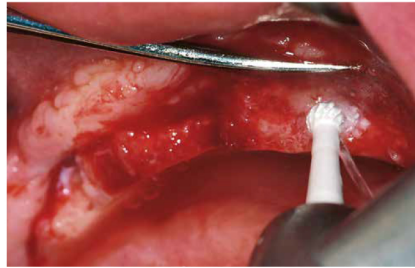
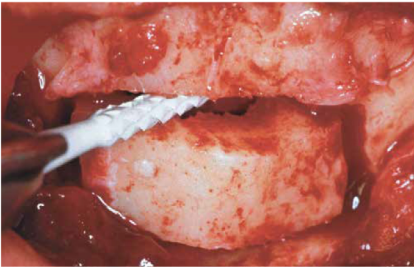
 Bone cutters for oral surgery.

Indications:

- For the restoration of alveolar ridges – smoothing of sharp bone edges
- For the extraction of bones, e.g. from the retromolar zone for autologous bone transplantation
- For osteotomy – when exposing impacted teeth
- For surgical preparation of teeth – apical ectomy
- For root amputation

Recommendations for use:

- The CeraBone cutters are to be used in intermittent mode using low contact pressure and constant exterior cooling with sterile physiological saline solution
- Optimum speed:
☉_{opt.} 3,000 – 6,000 rpm
in the green contra-angle,
Reduction: at least 10 : 1
- K157.314.016: ☉_{opt.} 80,000 rpm
- Make sure that the cutter does not jam. Do not use as a lever.



K157.104.016



K157.204.016



K157.205.016



K157.314.016



K160A.104.023



K160A.104.027



K160A.104.031



K160A.205.023



K160A.205.027



K160A.205.031

Utility model, patents
EP 1 539 018*
*pending

Distinct tip for good axial drilling properties

Cylindrical working part to avoid jamming during the preparation

Special blade configuration for low vibration during operation and great substance removal

